

Big Space Diffuser



PORTABLE COMMERCIAL SCENT DIFFUSER

ADVANTAGE

- Easy operation ✓
- Small and Portable machine ✓



1 L BOTTLE

SPECIFICATIONS

Product Size	W230*D 180*H 150mm
Package Size	W325*D282*H325mm
Power	31W
Noise level	<55dba
Weight	7.2kg
Net Weight	4.5kg
Suitable Coverage	5000cbm: 1600sqm; 16000sqft
Oil Consumption	7ml/h
Colour	Black
Voltage	220V or 110V
Installation	Hvac connect / Wall mounted
Capacity	1 L

Hygiene 4 You d.o.o.
 HOTO TOWER,
 Savska cesta 32,
 10000 Zagreb, Croatia, EU

+385 91 7921 152
 info@hygiene4you.com

www.hygiene4you.com

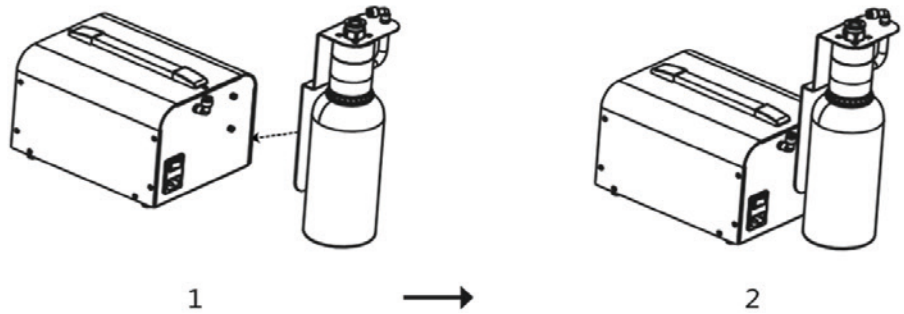
Oil Consumption Data(Work 12h per day-1000ml bottle)

Work seconds(s)	Pause seconds(s)	Working (days)
90	40	20
60	75	30
90	170	40
35	100	50
30	100	60

INSTALLATION

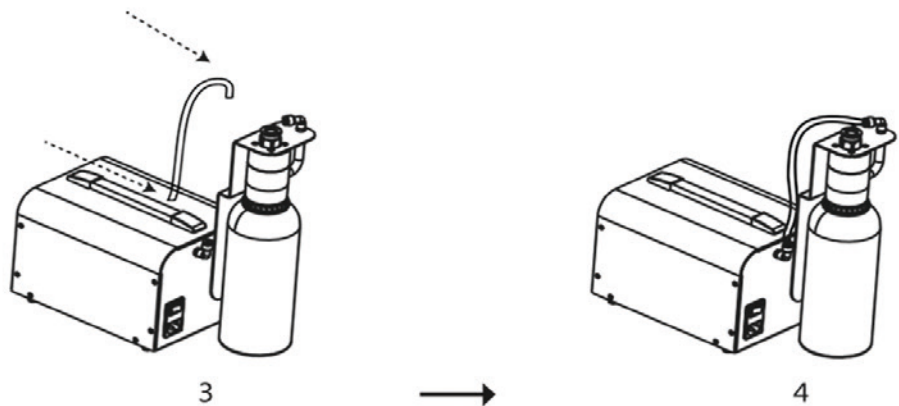
HVAC Connecting
Wall Mounted

Instruction for hard tube installation



1. Take out the fragrance oil bottle holder and put it on the device.

2. (As shown in the figure)



3. Insert one side of the hard tube into the outlet port of the device, insert another side into the fragrance oil bottle holder inlet port.

4. (As shown in the figure)

Hygiene 4 You d.o.o.
HOTO TOWER,
Savska cesta 32,
10000 Zagreb, Croatia, EU

+385 91 7921 152

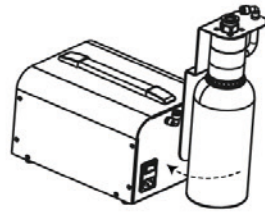
info@hygiene4you.com

www.hygiene4you.com

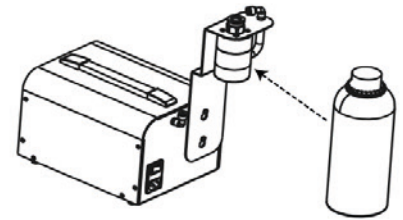
INSTALLATION

HVAC Connecting
Wall Mounted

Instructions for fragrance oil refill

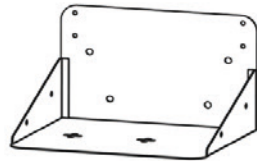


1. Twist the bottle clockwise and take off the oil bottle .

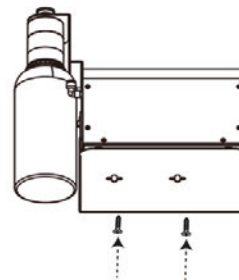


2. Clockwise rotate the bottle when the oil is full, then start setting the work time.

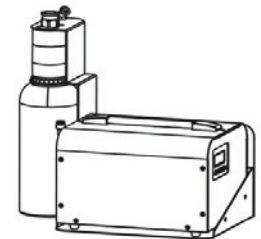
Instructions for machine wall mounted



1. Draw 4 points with wall hanging hardware bracket, use the diameter 8.0 drill the hole.

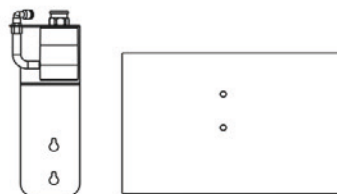


2. Install screws at the bottom to fix the machine when you install it on the machine.

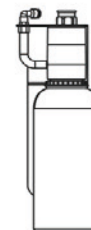


3. Put the Anchors in the wall to fix the wall hanging hardware bracket, hang the machine on the bracket, installed done.

Instructions for fragrance oil bottle wall mounted



1. Draw 2 points in the wall, use the diameter 6.0 to drill the hole

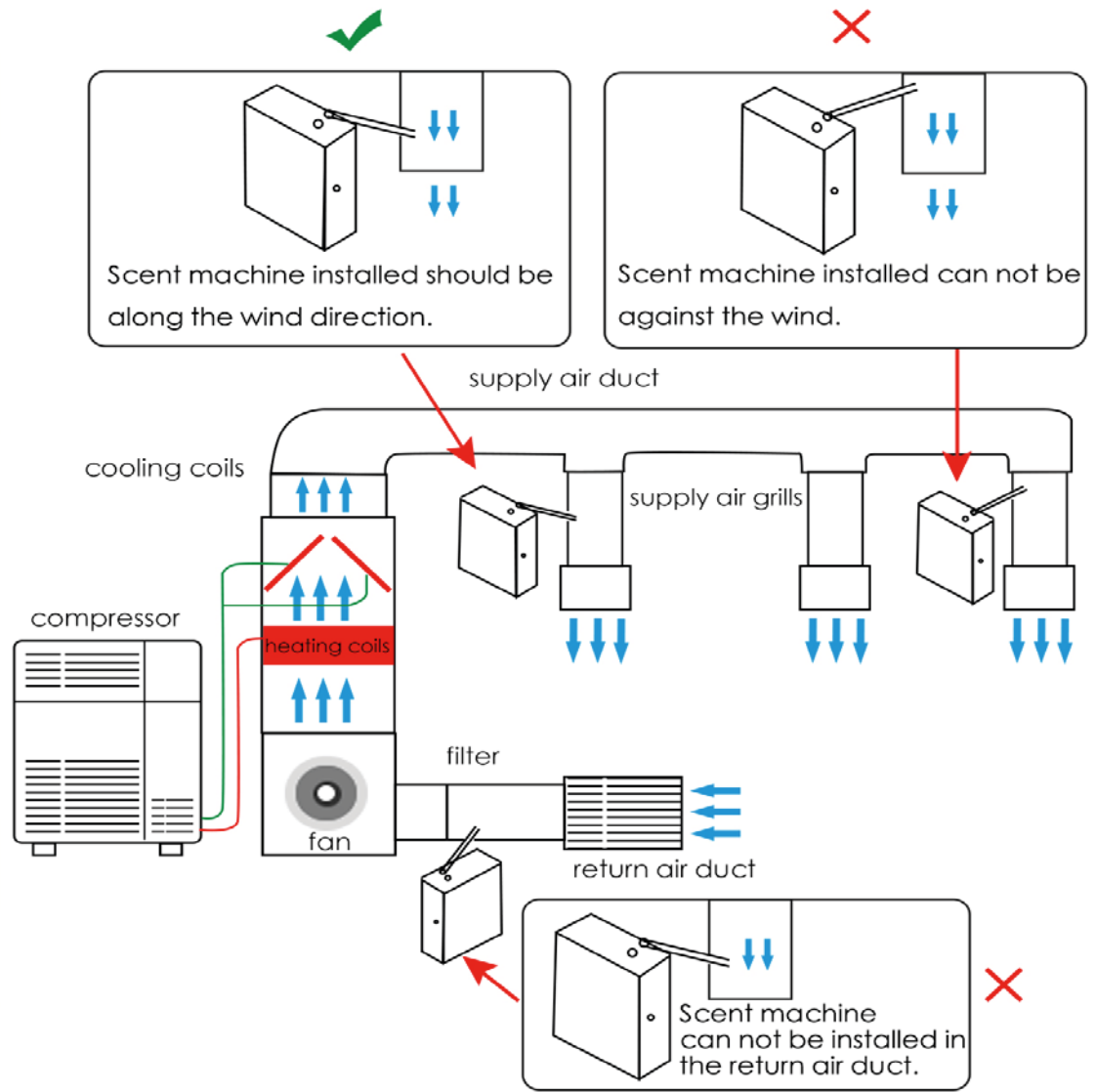


2. Put 6MM expansion pipe in the wall to fix the bracket, hang the oil bottle on the bracket, installed done.

Hygiene 4 You d.o.o.
HOTO TOWER,
Savska cesta 32,
10000 Zagreb, Croatia, EU

+385 91 7921 152
info@hygiene4you.com

www.hygiene4you.com

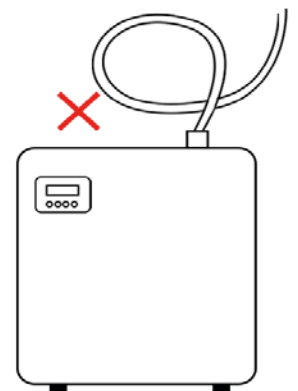
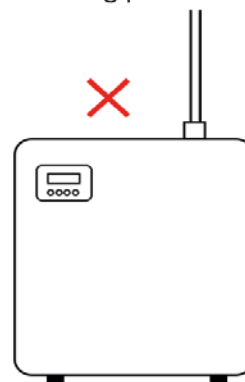
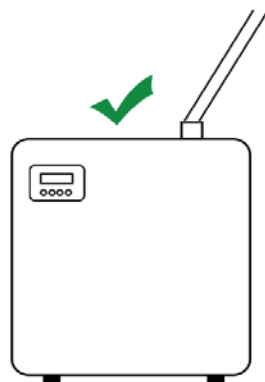


SUGGESTED INSTALLATION ANGLE OF PIPE

1. The pipe has a certain angle, fragrance oil can transport in easy way.

2. The pipe laying vertically, fragrance oil can not transport easy because the strong pressure.

3. The pipe bend, not good for fragrance oil transport.



Hygiene 4 You d.o.o.
 HOTO TOWER,
 Savska cesta 32,
 10000 Zagreb, Croatia, EU

+385 91 7921 152
 info@hygiene4you.com

www.hygiene4you.com